

www.globaleng.com



ABOUT THE COMPANY



THE COMPANY

GLOBAL ETC LIMITED is essentially a logistics support and engineering company, it aims to provide companies with products and services that will support their operations.

GLOBAL ETC LIMITED is healthy and efficiently managed company whose activities are totally focused on the oil and gas industry. It also promote the development of efficient methods and processes in the oil and gas industry on the adaptation of good standards in the area of supply, services, repair, lease of equipment and gear, marine operation support services and inspection.

GLOBAL ETC LIMITED is a well-structured organization with multi-skilled personnel which are the key factors underlying our reputation for efficiency, flexibility and deliverability. It's products and services meet standards obtainable in major Oil companies to ensure that our clients receives the highest quality services provided in Nigeria and of the host community. We are committed to the preservation of the environment in our operational areas. Safety and quality are our priorities.

MISSION STATEMENT

GLOBAL ETC LIMITED is a Nigerian based company set up with the genuine intent and desire to serve its clients professionally and profitably. It is our resolve to assist our clients in realizing their own profit margins by providing them with services while maintaining a competitive cost structure, value for money, in addition to training the Nigerian manpower in line with the Federal Government's Nigerian Content Development Plan.



OUR CORE VALUES

INTEGRITY

We strive to be a trusted and valued partner with all stakeholders. We adopt a non-tolerant approach to corruption.

SUSTAINABILITY

Ensuring all activities are carried out competently whilst being sensitive to sustainability issues.

HONESTY

We promote and insist on full transparency with all stakeholders at all times, operating in accordance with set guidelines and laws within the industry.

SOCIAL RESPONSIBILITY

We proactively seek to engage with the local community to enhance their living standards.

SAFETY

We adhere to the strictest industry safety standards.

CORPORATE RESPONSIBILITY



As a logistics support and engineering company, we give great importance to the health of the residents of our host communities and our employees. Our approach to social, societal and environmental responsibility is aimed first at reducing our environmental footprint and using natural resources in a reasonable manner.

RELATIONSHIPS

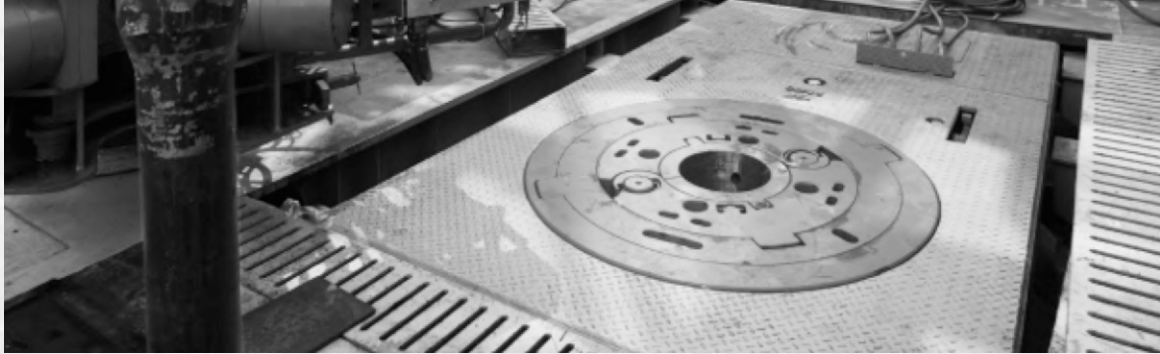
We recognize local communities as key stakeholders and whenever possible prefer to award service contracts to local companies in order to promote a healthy relationship. With this approach we aim to foster local prosperity, capacity and competence that benefits local economies by making them active stakeholders in our projects.

ENVIRONMENT

At Global ETC, we want local communities to share and benefit from the successful development of their natural resources. Our continuous improvement in our HSE performance is a direct result of the commitment of management and employees in the implementation of the company's HSE policy, as well as the philosophy that safety takes precedence over all tasks.

Our strict adherence to international Health, Safety and Environment standards has earned us zero Lost Time Incident (LTI) for several years on different FPSOs. We remain strongly committed to protecting the environment by seeking to adopt international best practices while developing efficient and effective management systems, which ensures the environment is protected and the livelihood of local communities are enhanced.

Our Environmental Management Plan (EMP) is project specific. We incorporate strategies to conserve and preserve existing flora and fauna, air and water quality, maintain noise level and also control waste management. All these mitigating measures form part of our environmental controls that will be embedded in the EMP for our projects.



ANTI CORRUPTION

Our corporate conduct is based on our commitment to acting professionally, fairly and with integrity. GETC does not tolerate any form of bribery and corruption.

COMMUNITY AND LOCAL IMPACT

We believe that working in partnership with communities over a sustained period of time is the most effective way to achieve real results and lasting change. Our approach is to engage with our neighbours, community leaders, non-governmental organizations and charities to understand the implications of our activities and changes in industry and wider society

HUMAN RIGHT

As a local company, we have a responsibility to uphold and protect the rights of individuals in all aspects of our operations across the Nigerian geo-market and beyond. We recognise the opportunity we have to contribute positively to global efforts to ensure that human rights are understood and observed.

POLITICAL INVOLVEMENT

Laws and regulations governing the activities of public affairs practitioners or attempts to influence the policy environment vary around the world. GETC will uphold the spirit letter of all relevant laws in relation to our political activities.

SECURITY

The security of GETC staff, contractors and other stakeholders and GETC assets, including its intellectual property and other intangible assets, is vital to the success of the organisation. To this end, GETC will strive to ensure that effective security measures are in place and that all employees and contractor contribute to security



OUR POLICIES

OCCUPATIONAL POLICY

Our goal is to prevent harm to our employees, our clients, our communities, and all others who could be affected by those activities, and to minimize impact to the environment.

ENVIRONMENTAL POLICY

Create safe work environments for all employees and ensure each employee understands, is trained and held responsible and accountable for health, safety, and environmental performance while conducting their daily business activities

DRUG AND ALCOHOL POLICY

recognizes that an employee's state of health may affect his ability to perform his job, may restrict the kind of work he can perform and may affect his future employability.

HEALTH SAFETY AND ENVIRONMENT POLICY

We focus on overall safety management through proactive inspections and monitoring, improved work processes, process safety and operational excellence initiatives and preventive maintenance.

FIRE SAFETY

Our comprehensive approach to fire and safety management is risk based through the conduct of risk assessments to guide all management's decision making. We take necessary measures to institutionalize controls for all risks, minimize and mitigate the impact of our activities and also ensure all operations are carried out within the strictest safety standards.

OUR SERVICES



GLOBAL ETC LIMITED as a logistics support and engineering oriented company, provide quality and cost effective services. We are partnered with international companies (OEM's) to provide the following services;

DRILLING AND SUPPORT SERVICES

- MWD/LWD Tools & Services
- Fishing & Wellbore Cleaning
- Slickline Services
- Downhole Tool Rentals Services
- Thru-Tubing Intervention
- Well Intervention Equipment
- Completion Tools and Services
- Personnel Service (Wireline, Slickline)
- Well Testing Services
- Compressors
- Welding Machines
- Plug & Abandonment services

Our success is driven by our ability to provide custom designed equipment and to remain flexible in an ever-changing industry. These core values have kept us independent and financially sound for a quarter of a century.

As our operation expands in size and grows in number, GETC remains committed to providing the highest-quality equipment and customer service. We thank you for being a part of our GETC family.

Product lines manufactured are interchangeable with major service companies suppliers thus adding greater acceptability and usage in oil field operations.

Partner:



WELL INTERVENTION



Generally speaking, well intervention is any process that enhances the quality of the subsea well, provides data to help manage the production rate of the well or shuts off and safely abandons a flowing well. One of the biggest challenges in subsea well intervention is keeping costs down. So rigorous and extensive preplanning is used to identify the best potential solutions while mitigating a multitude of known and unknown risks.

GETC is a leading provider of project management for production enhancement, workover/well intervention operations, well completion and well abandonment domains.

GETC offers a wide range of services ranging from Design, Planning & Engineering, Well-site Supervision, Project Management, Provision of 3rd party Oilfield Services & Coordination, Procurement & Logistics, to Field Studies & Candidate Selection.

We implement rigorous procedures for design and operations, ensuring compliance to clients' and industry's standard. Our workforce consists of Workover, Completion, Production engineers and Project managers to provide appropriate business and technical solutions to our clients.

GETC offers an extensive range of well intervention services and global experience to extend the life of producing wells by improving performance or providing access to stranded or additional hydrocarbon reserves

SLICKLINE SERVICES



Dynamic control and monitoring of completion, workover, and production intervention services, with a comprehensive range of data acquisition options.

RETRIEVABLE PLUGS

Reliably set, seal, and retract the plugs on slickline with the correct depth assured

MEMORY PRODUCTION LOGGING TOOLS

Experience advanced production logging measurements with the same accuracy and quality as those from the real-time configuration in situations that preclude surface readout operation.

DOWNHOLE CAMERA INVESTIGATIONS

Acquire high resolution images in real time or memory using downhole cameras.

DOWNHOLE NOISE LOG AND PIPE INTEGRITY EVALUATIONS

Acquire high-end data in memory while running fast on slickline. This includes internal tubular corrosion, erosion, mechanical damage, deposition and leak detections all in memory mode

DOWNHOLE GAUGES

BHP measurements and other downhole data acquisitions

SLICKLINE EXPERTS, COORDINATORS AND SUPERVISORS

Seasoned experts and specialized manpower that can operate the clients' slickline intervention program. Their participation is customized to accommodate the client's requirements

THRU-TUBING INTERVENTION TOOLS



With a wide variety of reliable tools for thru-tubing operations, GETC can meet and exceed your well's connecting, pulling, centralizing, and cutting needs.

SUBS;

Meet your fishing objectives and extend downhole tool life

PULLING TOOLS;

Retrieval of downhole tools with standard wireline profiles

OVERSHOTS;

Engagement of external fishing necks, circulation through fish, and retrieval of tubular fish.

CENTRALIZERS;

Centralization below wellbore restrictions.

TT Hydraulic Pipe Cutters;

One-trip pipe cutting.

TUBING PERFORATORS;

High performance perforators on slickline

HEAVY DUTY UNITS AND EQUIPMENT SETS;

which can deploy fishing and retrieval gears on braided line

WIRES CASED-HOLE INTERVENTION



With a broad range of cased-hole data interpretative support. GETC has highly skilled technical experts to provide comprehensive answers and clear intervention directions from the cased-hole data acquired.

GETC would collate diagnostic log data which are then interpreted comprehensively. The results are then applied towards prescribing fit-for-purpose intervention strategies for optimized productions from our clients' wells.

The technical experts available cover the domains of Well Integrity, Production, Petrophysics, Perforating, Well Stimulations and Completion designs.

FISHING SERVICES



The key elements of a fishing operation include an understanding of the dimensions and nature of the debris to be removed, the wellbore conditions, the tools and techniques employed and the process by which the debris will be handled at surface.

GETC has lots of success stories with client who we have averted unnecessary down time and cost during operations. Below are some images of GETC retrieving clamps and Completion string cables on a Deepwater rig.

GETC has also developed a system where Fishing operations can either run on Wireline or Drill pipe. GETC owns a variety of equipment to aid in the recovery of equipment lost downhole.

This would include;

- *Internal & External catching*
- *Jarring Assemblies*
- *Pulling Tools.*
- *Customized magnetic retrieval tools.*
- *Experienced Fishing consultants / Operators*

Heavy Duty Units and Equipment sets; which can deploy fishing and retrieval gears on braided line Other ranges of fishing tools such as Wire finder retrievers, Impression Blocks, Grabs, Spears, Wire/Cable cutters, Releasable overshot



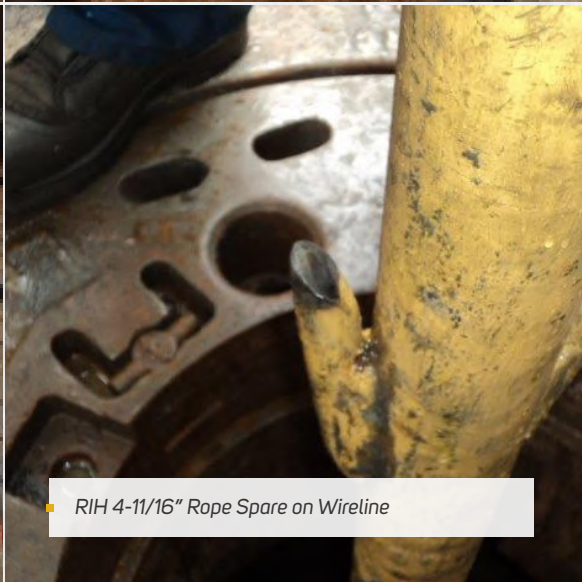
- 8" Focused Magnetic Retrieval Tool on Wireline



- 4-11/16" Rope Spare on Wireline



- Retrieval of 30ft of Flat Pack Control Line for Completion String



- RIH 4-11/16" Rope Spare on Wireline

PLUG & ABANDONMENT SYSTEMS



GLOBAL ETC work closely with you to ensure that your abandonment plans meet all technical and regulatory requirements. On location, our experienced, well-trained personnel execute each job with a focus on safety and quality.

We plan safe and efficient plug and abandonment of subsea and platform wells that have reached the end of their working lives using a holistic structural analysis approach and risk-based engineering assessments.

Casing cutters, plug-and-abandonment (P&A) systems to get you out faster, easier, and safer.

- *Retrievable plugs*
- *Permanent plugs*
- *Cement Dump Bailers*

GETC can reliably set, seal, and retract the plugs on slickline with the correct depth assured

ENGINEERING



We strive to satisfy each client's specific requirements. We work for a range of clients from service companies to operators, taking roles from subcontractor to turnkey contractor.

GLOBAL ETC LIMITED can assemble teams to execute all aspects of offshore projects either: Directly with the client for basic engineering and preparation of EPC or EPCI tender Or with the EPCI contractor, being in charge of detailed engineering and procurement. Project task forces include experts and clients' engineers Association abroad in joint ventures with the strongest local companies, or long term cooperation when required by the client or justified by market demand Constant research for cost-effective solutions.

Working in partnership with our highly-respected supply chain, including manufacturers, suppliers and subcontractors, our on-site delivery and operational aftercare services are designed to exceed our customers' expectations. Our reputation has been built by consistently delivering high quality, value for money and sustainable solutions. Our approach has seen us successfully included on a number of major frameworks and regularly invited to undertake repeat programmes of work of our customers.

We work in partnership with our customers and the communities in which we are invited to operate to provide local employment and supply opportunities, support education initiatives and protect the local environment. As part of GLOBAL ETC Group, we are able to offer the expertise of the other GLOBAL ETC businesses to deliver a truly integrated service.

We build, refurbish and extend structures from our network of offices across Nigeria and Africa. Our strong regional presence allows us to foster trusting and beneficial working partnerships with our customers, consultants, supply chain and local communities. At GLOBAL ETC, we love what we do, and we are extremely proud of the extensive range of projects that we have successfully delivered.

We provide a total solutions service covering project financing, property development, pre-construction management and design, alongside a first class construction delivery capability. We create flexible and functional facilities that meet the needs of our Clients and end-users, now and in the future.

PROCUREMENT



GLOBAL ETC LIMITED Procurement & Logistics team manages all procurement and logistics activities for the company and its partners within Africa, including strategic sourcing, purchasing, materials management, logistics, inventory management and accounts payable.

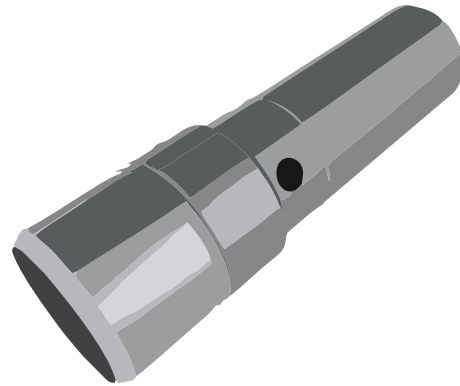
Part of our mission is to satisfy the needs of our customers by supplying products and services of consistently high quality designed to meet their requirements. We are therefore committed to procure only good quality products that meet with local and international standard.

Our purchasing department, headed by an expatriate is vastly experienced in procuring products and services both in Nigeria and Internationally. GLOBAL ETC LIMITED seeks to work with contractors and suppliers who contribute to sustainable development and are economically, environmentally and socially responsible.

GLOBAL ETC LIMITED Procurement framework provides a simple and consistent framework of our expectations for all our suppliers.



The Innovar X Wing® Debris Magnet



The Innovar Fishing Magnum Magnet®



BOP Cleaning assembly

IB107-(1)



*High Temperature
High Expansion Bridge Plug (THEX)*



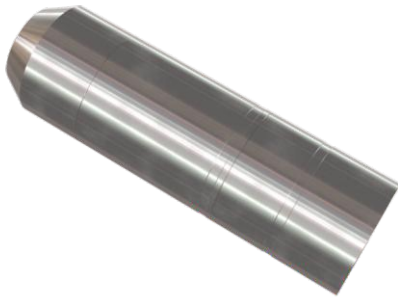
Multi Setting Pulling (MSP) Tool



High Pressure Test Plugs



Compression Package



Dual Back Pressure Valve (DBPV)



Bridge Plug Solutions

Tubing Packer (TP)

■ Slotted Bushing



■ Pup Joints



■ Downhole Camera



■ HX 300 Pack-Off



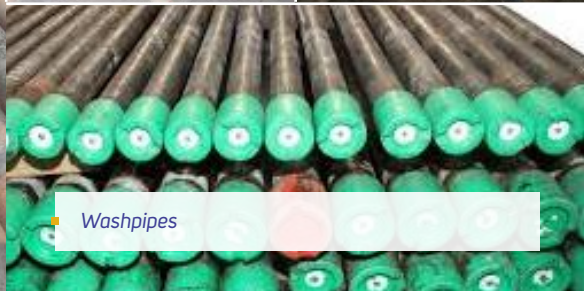
■ Rope Spear



■ Shooting Nipple



■ Washpipes



SOME OF OUR TECHNICAL PARTNERS RELATED CLIENTS



Corporate Office:

Plot 225 Trans-Amadi Industrial Layout,
Port Harcourt, Rivers State, Nigeria

Registered Office:

Plot 149 Trans-Amadi Industrial Layout,
Port Harcourt, Rivers State, Nigeria

Mobile: +234 806 888 5118

E-mail: info@globaletcng.com

Website: www.globaletcng.com

